

2021

FIBERGLASS PLANTER GUIDE



Why buy from Pots, Planters & More



ALL WEATHER CONSTRUCTION

Designed to withstand New York winters and Arizona summers



COMMERCIAL DURABILITY

Designed to withstand high traffic hotels & office buildings



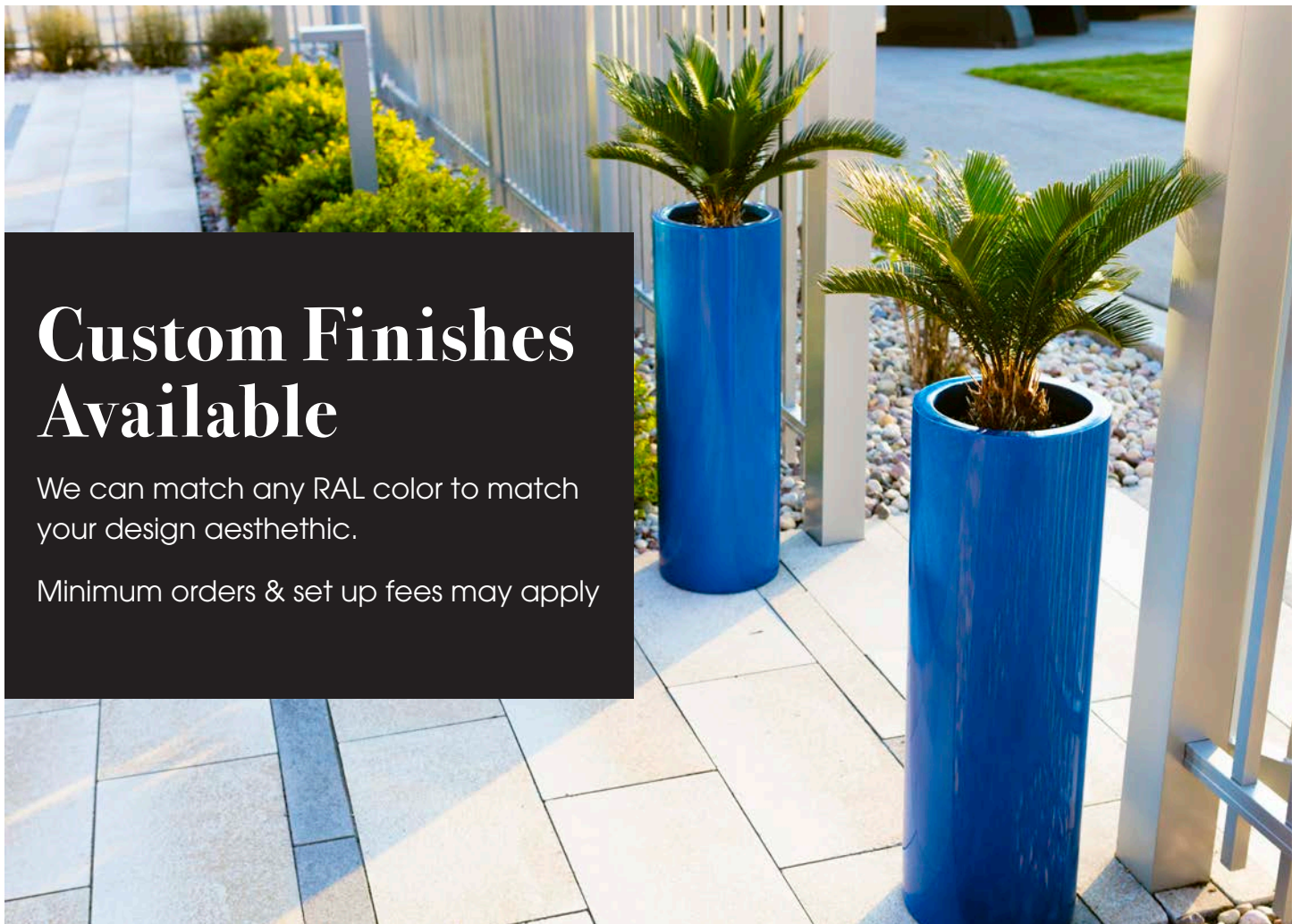
3 YEAR WARRANTY

We back up our work



WIDE RANGE OF COLOR

Huge selection of standard UV resistant finishes in low & high gloss. Ask for your free color sample



Custom Finishes Available

We can match any RAL color to match your design aesthetic.

Minimum orders & set up fees may apply

For over 11 years,

Pots, Planters & More has been manufacturing and supplying high quality **indoor and outdoor planters for restaurants, hotels, retail locations, office buildings, campuses, luxury landscapes, stately homes and more.**

Our Planters Can Be Found At:



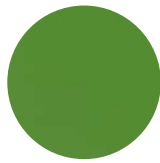
Fiberglass Planter Finishes



Amethyst



Antique White



Avocado



Beige



Bright White



Brite Copper



Bubblegum



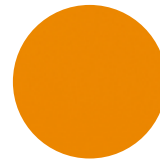
Burnt Orange



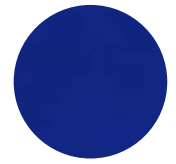
Champagne



Charcoal Grey



Clementine



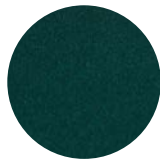
Cobalt Blue



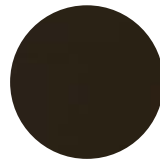
Cocoa Brown



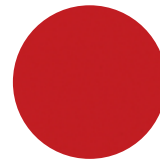
Eggplant Purple



Emerald



Espresso



Fire Engine Red



Gunmetal



Highland



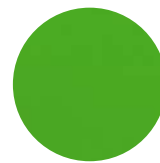
Horizon Blue



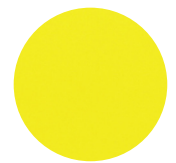
Infinity Black



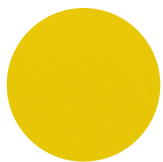
Java



Key Lime Green



Lemonade



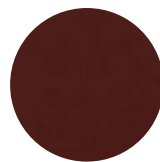
Lemon Yellow



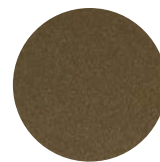
Light Gray



Matador Red



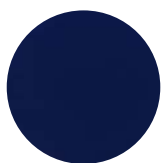
Merlot Red



Metallic Bronze



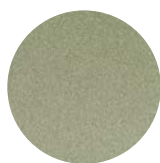
Metallic Silver



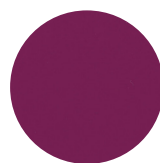
Midnight Blue



Navy Blue



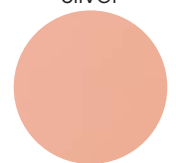
Nickel



Orchid



Oxblood Red



Pink Mimosa



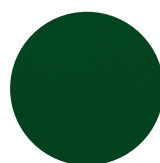
Redwood



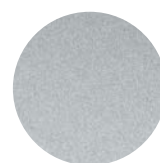
Sapphire Blue



Seafoam



Shamrock Green



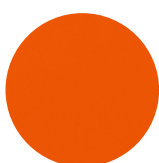
Silver Polish



Skyline



Stately Bronze



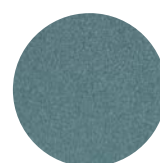
Tangerine Orange



Terracotta



Vintage Gold



Zircon



LOW PROFILE PLANTERS

LOW PROFILE PLANTERS



69013 | Kiel



69030 | Montserrat



69010 | Narbonne



69358 | Bonn



69719 | Lyon



70100 | Antwerp



Reinforced
Construction



Lightweight



Modern
Design



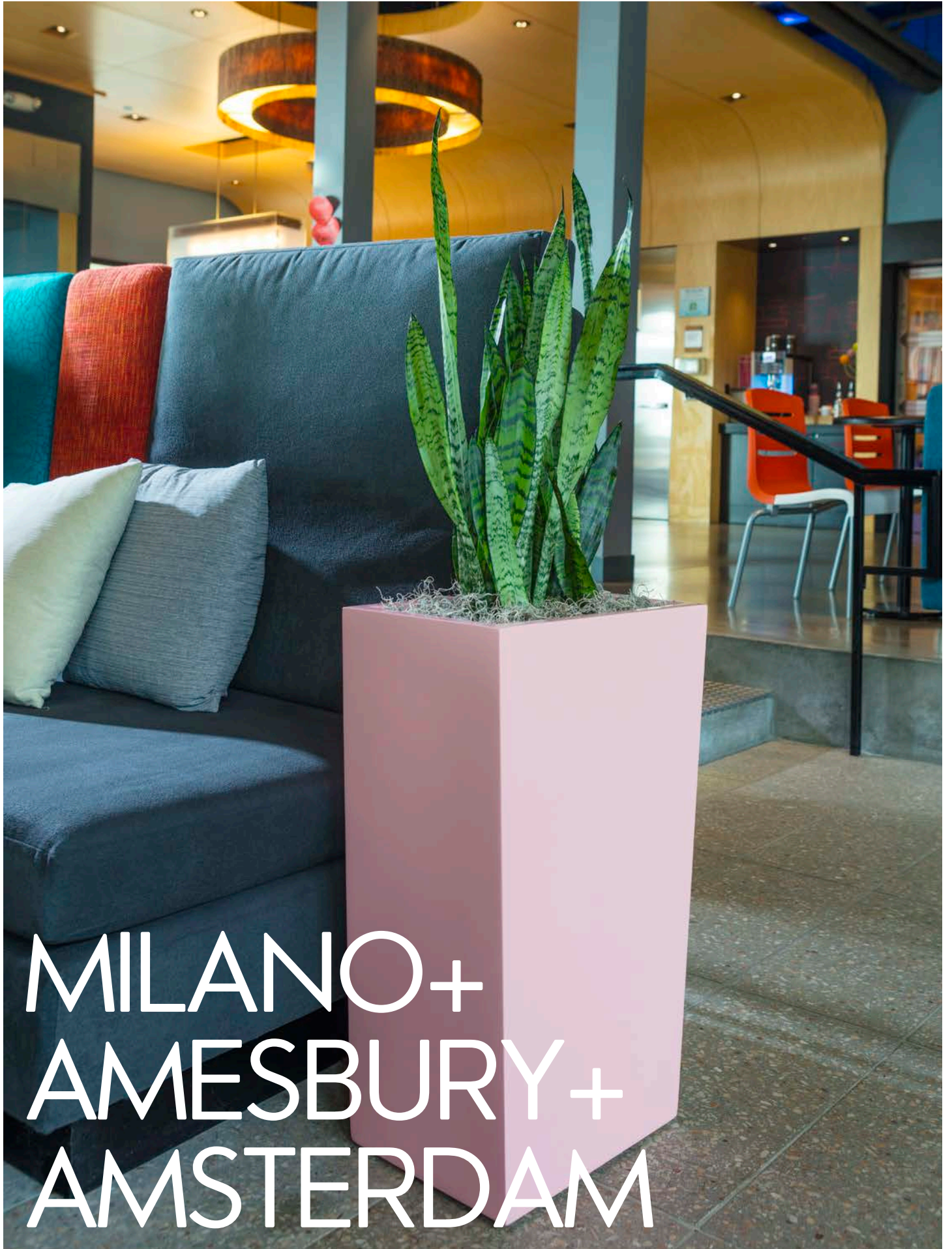
Hand
Crafted



UV + Frost
Resistant

Part Number	Outside Dimensions	Opening	Base Size	Weight	Gallons
69013	36"L x 14"W x 12"H	33.5"L x 11.5"W	36"L x 14"W	17.6 lbs	22.5
69030	48"L x 14"W x 12"H	45.5"L x 11.5"W	48"L x 14"W	19 lbs	30
69010	65"L x 14"W x 12"H	62.5"L x 11.5"W	65"L x 14"W	30.9 lbs	40.6
69358	45"L x 15"W x 8"H	43.5"L x 13.5"W	45"L x 15"W	17.2 lbs	20
69719	48"L x 18"W x 12"H	46"L x 15.5"W	48"L x 18"W	22 lbs	38.5
70100.36	36"L x 24"W x 12"H	33"L x 21"W	36"L x 24"W	34 lbs	38.5
70100.48	48"L x 24"W x 12"H	45"L x 21"W	48"L x 24"W	51.4 lbs	51.4

Please note that sizes may vary by up to 2% and that weights are approximations.



MILANO+ AMESBURY+ AMSTERDAM

MILANO + AMESBURY + AMSTERDAM



69615 | Amsterdam



69729 | Amesbury



69419 | Milano



Reinforced
Construction



Lightweight



Modern
Design



Hand
Crafted



UV + Frost
Resistant

Part Number	Outside Dimensions	Opening	Base Size	Weight	Gallons
69419.24	24"L x 10"W x 24"H	21.5"L x 7.5"W	24"L x 10"W	18.7 lbs	21.4
69419.36	36"L x 10"W x 24"H	33.5"L x 7.5"W	36"L x 10"W	24.7 lbs	32
69419.48	48"L x 10"W x 24"H	45.5"L x 7.5"W	48"L x 10"W	49 lbs	42.8
69729.24	24"L x 10"W x 32"H	21.5"L x 7.5"W	24"L x 10"W	28.7 lbs	28.5
69729.36	36"L x 10"W x 32"H	33.5"L x 7.5"W	36"L x 10"W	37.5 lbs	42.8
69729.48	48"L x 10"W x 32"H	45.5"L x 7.5"W	48"L x 10"W	67.2 lbs	57
69615.26	16"L x 10"W x 26"H	14.5"L x 8.5"W	13"L x 10"W	12.3 lbs	15.4
69615.30	20"L x 12"W x 30"H	18"L x 8.5"W	16"L x 12"W	17.2 lbs	26.7

Please note that sizes may vary by up to 2% and that weights are approximations.



TORINO+ GRANADA+ BRISBANE

TORINO+GRANADA+BRISBANE



70300 | Brisbane



70125 | Torino



70150 | Granada



Reinforced
Construction



Lightweight



Modern
Design



Hand
Crafted



UV + Frost
Resistant

Part Number	Outside Dimensions	Opening	Base Size	Weight	Gallons
70125.36	36"L x 24"W x 18"H	33"L x 21"W	36"L x 24"W	43.5 lbs	57.8
70125.48	48"L x 24"W x 18"H	45"L x 21"W	48"L x 24"W	53.4 lbs	77
70150.36	36"L x 24"W x 24"H	33"L x 21"W	36"L x 24"W	57.6 lbs	77
70150.48	48"L x 24"W x 24"H	45"L x 21"W	48"L x 24"W	80 lbs	102.8
70300.36	36"L x 24"W x 32"H	33"L x 21"W	36"L x 24"W	68.8 lbs	102.8
70300.48	48"L x 24"W x 32"H	45"L x 21"W	48"L x 24"W	92 lbs	137.14

Please note that sizes may vary by up to 2% and that weights are approximations.



TOLGA+ POTSDAM+ PERTH

TOLGA + POTSDAM + PERTH



69050 | Perth



69367 | Tolga



69345 | Potsdam



Reinforced
Construction



Lightweight



Modern
Design



Hand
Crafted



UV + Frost
Resistant

Part Number	Outside Dimensions	Opening	Base Size	Weight	Grow Pot
69367.36	36"L x 16"W x 24"H	33.25"L x 13.25"W	36"L x 16"W	33.1 lbs	10" x 3
69367.48	48"L x 16"W x 24"H	45.25"L x 13.25"W	48"L x 16"W	39.7 lbs	10" x 4
69367.60	60"L x 16"W x 24"H	57.25"L x 13.25"W	60"L x 16"W	47.4 lbs	10" x 5
69345.36	36"L x 16"W x 32"H	33.25"L x 13.25"W	36"L x 16"W	40.8 lbs	10" x 3
69345.48	48"L x 16"W x 32"H	45.25"L x 13.25"W	48"L x 16"W	52.9 lbs	10" x 3
69345.72	72"L x 16"W x 32"H	69"L x 13.25"W	72"L x 16"W	73.2 lbs	10" x 6
69050.36	36"L x 16"W x 42"H	33.25"L x 13.25"W	36"L x 16"W	50.7 lbs	10" x 3
69050.48	48"L x 16"W x 42"H	45.25"L x 13.25"W	48"L x 16"W	65 lbs	10" x 4

Please note that sizes may vary by up to 2% and that weights are approximations.



SELENGE+ HUDSON

SELENGE + HUDSON



69497 | Selenge



69381 | Hudson



Reinforced
Construction



Lightweight



Modern
Design



Hand
Crafted



UV + Frost
Resistant

Part Number	Outside Dimensions	Opening	Base Size	Weight	Gallons
69497.84	84"L x 36"W x 18"H	81"L x 33"W	84"L x 36"W	113 lbs	202.5
69381	100"L x 18"W x 28"H	97"L x 15"W	100"L x 18"W	119 lbs	187.5

Please note that sizes may vary by up to 2% and that weights are approximations.



BADALONA

USA / www.citiscapesusa.com

BADALONA



69220 | Badalona



Reinforced
Construction



Lightweight



Modern
Design



Hand
Crafted



UV + Frost
Resistant

Part Number	Outside Dimensions	Opening	Base Size	Weight	Gallons
69220	39"L x 17"W x 17"H	35.75"L x 13.75"W	39"L x 17"W	20.7 lbs	41.9

Please note that sizes may vary by up to 2% and that weights are approximations.



TABLETOP+ WINDOWBOX COLLECTION

TABLETOP + WINDOWBOX COLLECTION



69213 | Camoux



69453 | Wheeling



69210 | Salon



69316 | Tupelo



69473 | Weir



69478 | Vicksburg



Reinforced
Construction



Lightweight



Modern
Design



Hand
Crafted



UV + Frost
Resistant

Part Number	Outside Dimensions	Opening	Base Size	Weight	Gallons
69316.20	20"L x 07"W x 07"H	19"L x 6"W	20"L x 07"W	7.2 lbs	3.6
69473.26	26"L x 07"W x 07"H	25"L x 6"W	26"L x 07"W	8.5 lbs	4.7
69478.32	32"L x 07"W x 07"H	31"L x 6"W	32"L x 07"W	13.2 lbs	5.8
69453.44	44"L x 07"W x 07"H	43"L x 6"W	44"L x 07"W	15 lbs	8
69210	42"L x 08"W x 08"H	38.5"L x 04"W	42"L x 08"W	8 lbs	10
69213.36	36"L x 08"W x 18"H	32"L x 04"W	36"L x 08"W	17 lbs	15
69213.48	48"L x 08"W x 18"H	44"L x 04"W	48"L x 08"W	22.5 lbs	21
69213.54	54"L x 08"W x 18"H	50"L x 04"W	54"L x 08"W	27.6 lbs	28.9

Please note that sizes may vary by up to 2% and that weights are approximations.



MONTROY CUBE

MONTROY CUBE



69141 | Montroy



Reinforced
Construction



Lightweight



Modern
Design



Hand
Crafted



UV + Frost
Resistant

Part Number	Outside Dimensions	Opening	Base Size	Weight	Gallons
69141.16	16"L x 16"W x 16"H	12.75"L x 12.75"W	16"L x 16"W	12.1 lbs	15
69141.22	22"L x 22"W x 22"H	17.75"L x 17.75"W	22"L x 22"W	20.3 lbs	39.6
69141.24	24"L x 24"W x 24"H	21"L x 21"W	24"L x 24"W	32.2 lbs	51
69141.28	28"L x 28"W x 28"H	22.75"L x 22.75"W	28"L x 28"W	39.7 lbs	81.6
69141.32	32"L x 32"W x 32"H	28.75"L x 28.75"W	32"L x 32"W	53.8 lbs	121
69141.36	36"L x 36"W x 36"H	32.75"L x 32.75"W	36"L x 36"W	68.3 lbs	173
69141.40	40"L x 40"W x 40"H	36.75"L x 36.75"W	40"L x 40"W	88.4 lbs	238

Please note that sizes may vary by up to 2% and that weights are approximations.



TOULAN + LIMA + PANAMA

TOULAN + LIMA + PANAMA



69505 | Toulan



69305 | Lima



69715 | Panama



Reinforced
Construction



Lightweight



Modern
Design



Hand
Crafted



UV + Frost
Resistant

Part Number	Outside Dimensions	Opening	Base Size	Weight	Gallons
69305.11	12"L x 12"W x 12"H	9.5"L x 9.5"W	6"L x 6"W	5.5	6.4
69305.15	16"L x 16"W x 16"H	13.5"L x 13.5"W	8"L x 8"W	8.4 lbs	15
69305.19	20"L x 20"W x 20"H	16.5"L x 16.5"W	10"L x 10"W	12.8 lbs	29.7
69305.24	24"L x 24"W x 24"H	21"L x 21"W	12"L x 12"W	17.2	51
69505.11	12"L x 12"W x 22"H	10"L x 10"W	9"L x 9"W	9.9 lbs	11.7
69505.15	16"L x 16"W x 30"H	13.25"L x 13.25"W	12"L x 12"W	19.8 lbs	28.5
69505.36	18"L x 18"W x 36"H	15"L x 15"W	14.5"L x 14.5"W	25.6 lbs	43
69505.18	20"L x 20"W x 42"H	17"L x 17"W	19"L x 19"W	32.2 lbs	62.5
69505.23	23"L x 23"W x 48"H	20"L x 20"W	19.25"L x 19.25"W	46.3 lbs	94
69505.28	28"L x 28"W x 60"H	25"L x 25"W	23.5"L x 23.5"W	68.6 lbs	175
69715	36"L x 12"W x 18"H	33.25"L x 9.25"W	34"L x 10"W	20.7 lbs	28.9

Please note that sizes may vary by up to 2% and that weights are approximations.



SANTIAGO+ BRITZ+ SAPPORO

SANTIAGO + BRITZ + SAPPORO



69160 | Britz



69150 | Santiago



70350 | Sapporo



Reinforced
Construction



Lightweight



Modern
Design



Hand
Crafted



UV + Frost
Resistant

Part Number	Outside Dimensions	Opening	Base Size	Weight	Gallons
69150.12	12"L x 12"W x 24"H	9.5"L x 9.5"W	12"L x 12"W	5.5	12.8
69150.16	16"L x 16"W x 32"H	13.5"L x 13.5"W	16"L x 16"W	8.4 lbs	30.4
69150.20	20"L x 20"W x 42"H	17.5"L x 17.5"W	20"L x 20"W	12.8 lbs	62.5
69160.08	08"L x 08"W x 42"H	6"L x 6"W	8"L x 8"W	9.9 lbs	10
69160.12	12"L x 12"W x 51"H	10"L x 10"W	12"L x 12"W	19.8 lbs	27.3
69160.16	16"L x 16"W x 60"H	14"L x 14"W	16"L x 16"W	25.6 lbs	57.1
70350	24"L X 24"W X 32"H	21"L X 21"W	24"L X 24"W	49.3 lbs	68

Please note that sizes may vary by up to 2% and that weights are approximations.



SAINT TROPEZ+ LISBON

SAINT TROPEZ + LISBON



69626 | Saint Tropez



69121 | Lisbon



Reinforced Construction



Lightweight



Modern Design



Hand Crafted



UV + Frost Resistant

Part Number	Outside Dimensions	Opening	Base Size	Weight	Gallons
69121.14	14" Dia x 25"H	11.5" Dia	11" Dia	9.9 lbs	14
69121.18	18" Dia x 32"H	15.25" Dia	15" Dia	16.5 lbs	30
69121.24	24" Dia x 36"H	21" Dia	19" Dia	23.1 lbs	60
69626.12	12" Dia x 32"H	10" Dia	9" Dia	10.6 lbs	13
69626.16	16" Dia x 38"H	13.25" Dia	11.75" Dia	15.4 lbs	28
69626.20	20" Dia x 42"H	17" Dia	14.25" Dia	20.5 lbs	50

Please note that sizes may vary by up to 2% and that weights are approximations.



WANNSEE + BRANNAN+ALZIRA

WANNSEE + BRANNAN + ALZIRA



69600 | Brannan



69230 | Wannsee



69285 | Alzira



Reinforced
Construction



Self-
Watering



Modern
Design



Fill/Drain
Plugs



UV + Frost
Resistant

Part Number	Outside Dimensions	Opening	Base Size	Weight	Gallons
69230.33	33" Dia x 29"H	29" Dia	18" Dia	28.7 lbs	92.2
69230.39	39" Dia x 34"H	35" Dia	23" Dia	39.7 lbs	151
69230.44	44" Dia x 39"H	40" Dia	26" Dia	48.5 lbs	220.6
69285.23	23" Dia x 22"H	18.25" Dia	10" Dia	12.8 lbs	34
69285.36	36" Dia x 34"H	31.25" Dia	15.5" Dia	32.6 lbs	128.7
69600.18	18" Dia x 29"H	14.75" Dia	8.5" Dia	11.9 lbs	27.4
69600.35	35" Dia x 41"H	31.75" Dia	17.75" Dia	35.3 lbs	146.7

Please note that sizes may vary by up to 2% and that weights are approximations.



VALENCIA+ SALZBURG+ PEYPIN

VALENCIA+SALZBURG+PEYPIN



69110 | Peypin



69105 | Salzburg



69125 | Valencia



Durable
Fiberglass



Lightweight



Modern
Design



Hand
Crafted



UV + Frost
Resistant

Part Number	Outside Dimensions	Opening	Base Size	Weight	Gallons
69125.15	15" Dia x 18"H	13" Dia	7" Dia	7 lbs	11.8
69125.20	20" Dia x 23"H	16.5" Dia	10" Dia	15 lbs	26.8
69125.27	27" Dia x 31"H	23" Dia	13" Dia	24 lbs	66
69105.15	16" Dia x 12"H	13.5" Dia	8.5" Dia	6 lbs	8.9
69105.19	20" Dia x 15"H	16.5" Dia	11" Dia	9 lbs	17.5
69110	28" Dia x 48"H	24" Dia	16" Dia	34 lbs	109.9

Please note that sizes may vary by up to 2% and that weights are approximations.



RIO GRANDE+ CORRY

RIO GRANDE + CORRY



69607 | Corry



69205 | Rio Grande



Reinforced Construction



Lightweight



Modern Design



Hand Crafted



UV + Frost Resistant

Part Number	Outside Dimensions	Opening	Base Size	Weight	Gallons
69205.18	18" Dia x 20"H	15.75" Dia	18" Dia	11 lbs	18.9
69205.22	22" Dia x 22"H	18.75" Dia	22" Dia	17 lbs	31.1
69607.20	10" Dia x 20"H	8" Dia	10" Dia	6 lbs	5.8
69607.30	10" Dia x 30"H	8" Dia	10" Dia	7 lbs	8.7
69607.36	12" Dia x 36"H	10" Dia	12" Dia	11 lbs	15

Please note that sizes may vary by up to 2% and that weights are approximations.



TEGEL+ PEGO OVAL

TEGEL + PEGO OVAL



69185 | Tegel



69225 | Pego Oval



Reinforced
Construction



Lightweight



Modern
Design



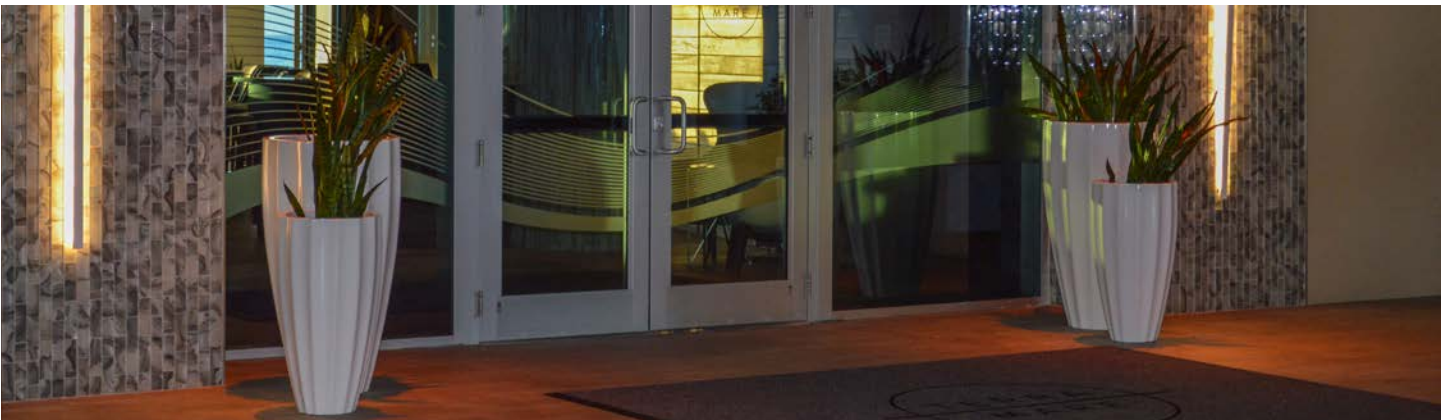
Hand
Crafted



UV + Frost
Resistant

Part Number	Outside Dimensions	Opening	Base Size	Weight	Gallons
69185.18	18" Dia x 26"H	15.75" Dia	14" Dia	11 lbs	24.6
69185.22	22" Dia x 30"H	19.5" Dia	18" Dia	15 lbs	42.4
69225.18	18.5"L x 14.5"W x 26"H	16"L x 12"W	13"L x 9.5"W	11 lbs	26
69225.22	25.5"L x 22"W x 30"H	22.5"L x 19"W	20.5"L x 17"W	19 lbs	57

Please note that sizes may vary by up to 2% and that weights are approximations.



SANTA BARBARA+ SAN JOSE+ ALICANTE

SANTA BARBARA + SAN JOSE + ALICANTE



69587 | San Jose



69561 | Santa Barbara



69468 | Alicante



Reinforced
Construction



Lightweight



Modern
Design



Hand
Crafted



UV + Frost
Resistant

Part Number	Outside Dimensions	Opening	Base Size	Weight	Gallons
69561.23	23" Dia x 20"H	19" Dia	10" Dia	27.8 lbs	30.9
69587.16	16" Dia x 30"H	12.5" Dia	9" Dia	12.9 lbs	22.4
69587.22	22" Dia x 40"H	18" Dia	12" Dia	31 lbs	56.5
69468.15	15" Dia x 21"H	12.5" Dia	6.5" Dia	19.8 lbs	13.8
69468.22	22" Dia x 27"H	18.5" Dia	8.5" Dia	29.8 lbs	38.1
69468.26	26" Dia x 32"H	23" Dia	10" Dia	33.5 lbs	63.2

Please note that sizes may vary by up to 2% and that weights are approximations.



MARSEILLE BOWL + TARRAGONA BOWL

MARSEILLE BOWL + TARRAGONA BOWL



69795 | Marseille Bowl



69415 | Tarragona



Reinforced
Construction



Lightweight



Modern
Design



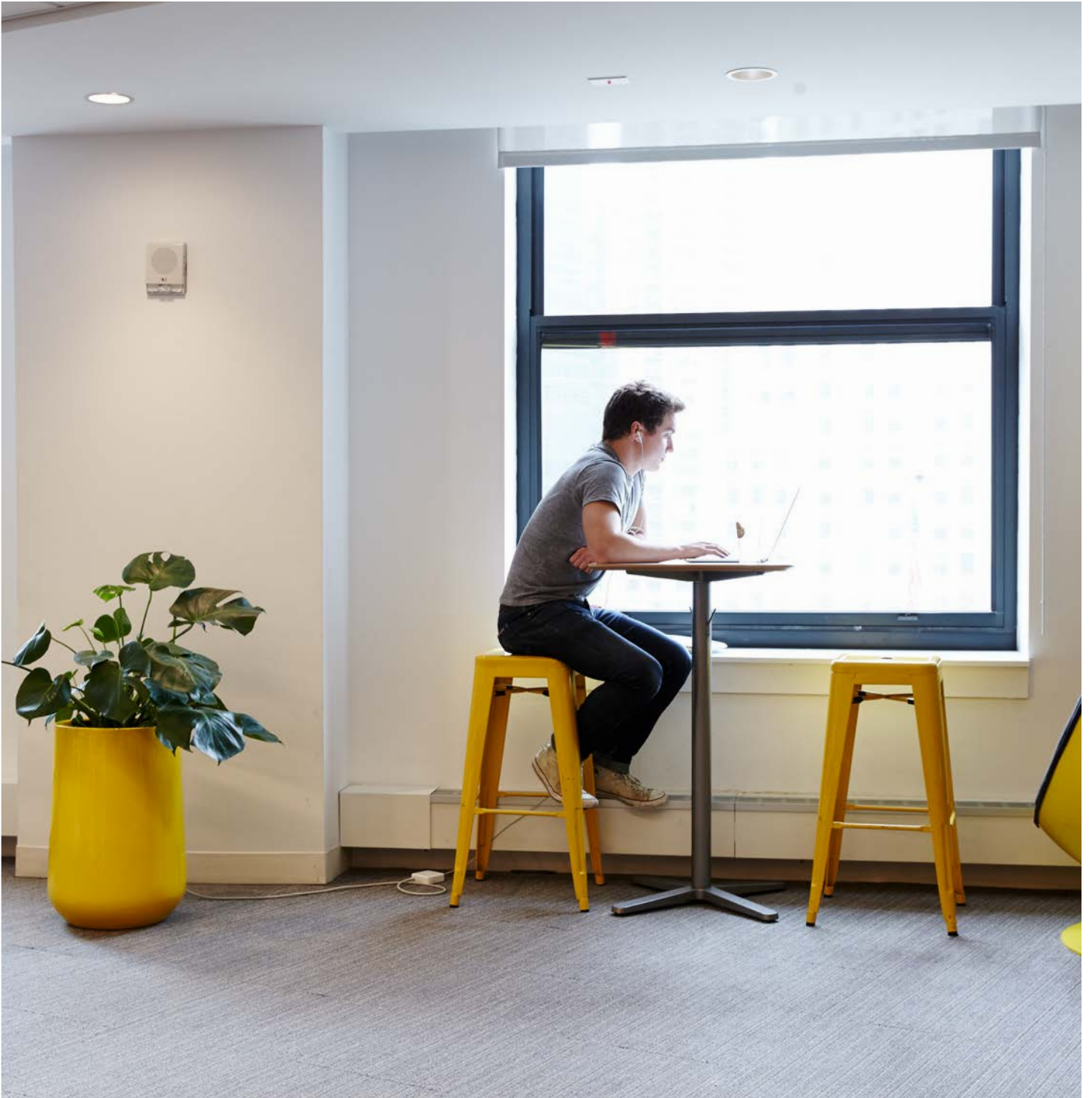
Hand
Crafted



UV + Frost
Resistant

Part Number	Outside Dimensions	Opening	Base Size	Weight	Gallons
69795.24	24" Dia x 12"H	23.25" Dia	10.5" Dia	13 lbs	20
69795.36	36" Dia x 14"H	35.25" Dia	16" Dia	29 lbs	53
69415.30	30" Dia x 20"H	27" Dia	12" Dia	17 lbs	52.5

Please note that sizes may vary by up to 2% and that weights are approximations.



HAYDEN + SHORT HAYDEN

HAYDEN + SHORT HAYDEN



69015 | Hayden



69117 | Short Hayden



Reinforced
Construction



Lightweight



Modern
Design



Hand
Crafted



UV + Frost
Resistant

Part Number	Outside Dimensions	Opening	Base Size	Weight	Gallons
69015.10	08" Dia x 15"H	6.75" Dia	6.5" Dia	4 lbs	2.8
69015.12	12" Dia x 20"H	10.75" Dia	09" Dia	6 lbs	8.4
69015.15	15" Dia x 23"H	13.25" Dia	12.5" Dia	10 lbs	15
69117.12	12" Dia x 07"H	09" Dia	11" Dia	3 lbs	2.9
69117.16	16" Dia x 08"H	12.5" Dia	13" Dia	5 lbs	5.9
69117.20	20" Dia x 10"H	16" Dia	15.5" Dia	7 lbs	11.6

Please note that sizes may vary by up to 2% and that weights are approximations.



ACCENT PLANTERS

ACCENT PLANTERS



69295 | Globe



69215 | Strasbourg



69155 | Bara Jar



69245 | Spiral



Reinforced
Construction



Lightweight



Modern
Design



Hand
Crafted



UV + Frost
Resistant

Part Number	Outside Dimensions	Opening	Base Size	Weight	Gallons
69155.20	20" Dia x 31"H	11" Dia	11" Dia	13 lbs	36.2
69155.24	24" Dia x 37"H	14" Dia	14" Dia	18 lbs	62.2
69295.24	24" Dia x 19"H	13" Dia	16" Dia	15 lbs	31.9
69295.36	36" Dia x 30"H	17" Dia	20" Dia	31 lbs	113.6
69215	26" Dia x 40"H	18" Dia	13.5" Dia	27 lbs	79
69245	26" Dia x 26"H	19.5" Dia	17" Dia	26.5 lbs	51.3

Please note that sizes may vary by up to 2% and that weights are approximations.

How Fiberglass Planters Are Made:



Our Planters are constructed of the highest quality materials prepared by highly skilled craftsmen made to last and to maintain their beauty for years to come!

Top-quality fiberglass planters are truly a work of art that requires many processes over a period of time by expert artisans. Each fiberglass planter is created with a custom mold in the exact size, shape, and dimensions of the final product. Then fiberglass sheets are carefully and expertly cut, shaped and inserted into and surrounding the mold. High-quality polyester resin is then applied several times over the mold (depending on the size and shape of the planter) to create the final product.

Once the final coat becomes hard, the planter will then be taken to the finishing department where each of our planters are meticulously finished by hand by highly skilled artisans. Like an expensive fiberglass boat or car, the finishing department trims the product of any excess materials and evenly sands the fiberglass surface so that the finish is smooth. This process is time-intensive but necessary to produce the exquisite, durable quality planters that our customers have come to love and to expect.

After you place your order, the planter goes thru our rigorous finishing process. The base planter is inspected another time to ensure quality construction, then our specially trained finishing team applies your color to the planter. We use a durable poly-urethane finish that can be found on trucks and industrial equipment that needs to stand the test of time. This material, coupled with our artisan team finishes your planter into a work of art that will enhance your space for years to come.

Many competitors take shortcuts that become obvious in the aesthetics, quality, and wear of fiberglass planters, which is why our multi-step hand-finishing process is so important and has become the hallmark of our success and quality in producing fine planters.

High Quality Planters:

- Our products are lightweight because we use high-quality polyester resin.
- Each planter is carefully hand-finished. When you feel the surface of our products, or inspect the interior, it is smooth and continuous, which is what you should expect from high-quality fiberglass planters.

Poor Quality Planters:

- Are overly heavy. If the product feels heavy, it's likely that the manufacturer added fillers to the resin. Fillers sacrifice quality and make the products less valuable and durable.
- Large lumps or strips of fiberglass matting indicate poor construction and improper finishing. Poor quality planters are rough rather than smooth, with waves, bumps or imperfections in the finish, which may mean that the product has been made on unsuitable equipment and corners have been cut with poor finishing techniques.

Why Buy Fiberglass Planters?

- **Low Maintenance** (Our planters are designed to be left outside for years with little more than an occasional cleaning)
- **Weather Resistant** (Designed to endure cold winters without cracks, and hot summers without fading)
- **Large Range Of Colors** (With over 47 standard colors available in U.V. resistant low & high gloss finishes, you will be able to bring your design vision to life.)
- **Lightweight** (Our planters are lightweight and easy to move.)
- **Work of Art** (Enhance your space with timeless pieces that bring a pop of color to any design.)
- **Size Options** (Working in fiberglass allows us to create small tabletop pieces, or extra large planters that hold 1000s of pounds of soil, and trees.)

Care & Maintenance

Our planters are designed to be used without saucers and have 1/8" feet to help water drain and to prevent water being trapped under the planter when used outdoors.

PLEASE NOTE: We recommend that all planters be used with potting soil, or a light soil mixture.

Potting soil is specially formulated for planter and container gardening and is usually a mixture of soil, hummus and peat, but varies according to mixture. To ensure you are using the correct type of potting soil for your plant(s), check with a professional to determine the correct regional and plant specific soil to be used.

Heavier soil and "earth" absorb and retain more water which can apply strong pressure to the walls of the planter and can cause structural damage in larger planters.

Plants with nursery pots can be set into the planter, but depending on the type of plant(s), you can plant directly in your planter(s). You will need:

- Drill and Drill Bits (If you did not select your planter to be delivered with drainage holes)
- Landscaping Fabric
- Gravel
- Potting Soil

By using layers of landscaping fabric and gravel under the soil, water in the planter will be filtered and this will reduce soil loss through the drainage holes. This will also help to keep plant(s) healthy and prevent root rot.

Drilling Drainage Holes in your planter:

Our planters are designed for indoor or outdoor use. If you are using your planter outdoors, you will need to drill drainage holes to allow excess water to drain from the planter. If you are using your planter indoors, drainage holes are not required. Drainage holes can be requested upon ordering to have our team pre-drill your planter.

Our planters are designed to allow drainage holes to be drilled in the bottom of the planter with no adverse effects to the life or performance of the planter. Drainage holes may be drilled with a standard drill bit. No special tools are required.

1. Determine how many and what size drainage holes you will need.
2. Using a marker, mark the bottom of the planter with guides for drilling holes.
3. Carefully drill through the base of the planter straight through the material.

There are lots of choices when it comes to fiberglass products.

Preparing your planter for planting:

If you are drilling drainage holes, complete the above steps before preparing your planter for planting.

1. Cut out two layers of landscaping fabric slightly larger than the interior dimensions of the planter.

NOTE: if you are using a drip irrigation system, you may want to insert your tube(s) through your drainage hole(s) to make them less conspicuous.

2. Place a layer of landscaping fabric inside the planter completely covering the bottom of the planter. Allow the edges of the fabric to rise around the edges of the planter.
3. Place a layer of gravel in the planter on top of the landscaping fabric. This layer can be up to several inches deep.
4. Repeat steps 2 and 3.
5. Pour or scoop a layer of potting soil into the planter. Use enough potting soil to accommodate the roots of your plant(s).
6. Once your plant(s) are planted, add potting soil or a topping of your choice (such as small pebbles or moss) to cover the roots of your plant(s). Consult a professional to determine the type of topping that will suit your plant(s).



Maintaining your finish

1. Brush away any dirt or debris with a soft brush.
2. Wipe down the planter with a mix of water and a small amount of dish soap and a soft sponge.
3. Rinse the planter with a hose, or a soft sponge and clean water.
4. (Optional) You can extend the life of your finish by applying an automotive wax to the planter. (Follow instructions on the product you purchase)
5. Enjoy your clean and refreshed planter.



Pots, Planters & More

DESIGNS THAT EMBODY STYLE, FORM + FUNCTION

PotsPlantersAndMore.com | P: 888-381-9501

7650 Austin Ave | Skokie, IL 60077

Copyright © 2021 Greentec Innovations, Inc.